


TIER[®]



-  MULTIPACK
-  CONTEMPORARY
-  CARE & MAINTENANCE
-  ASSOCIATED PRODUCTS
-  INSTALLATION

Natural Stone **Made Simple**



CONTENTS

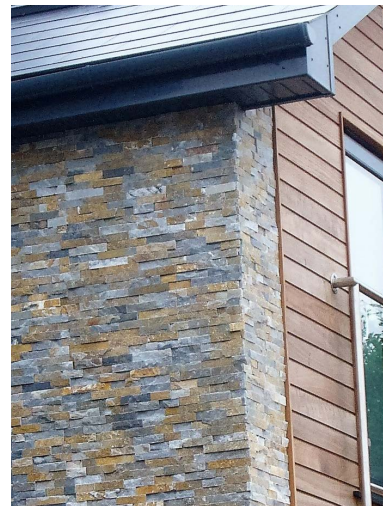
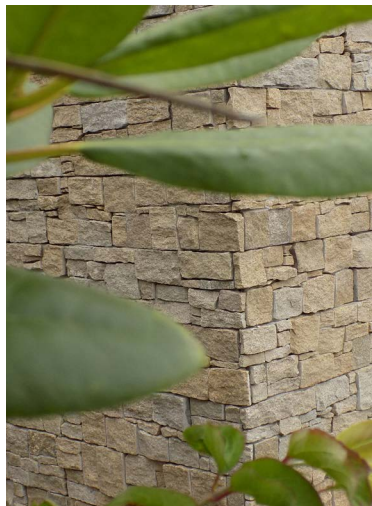
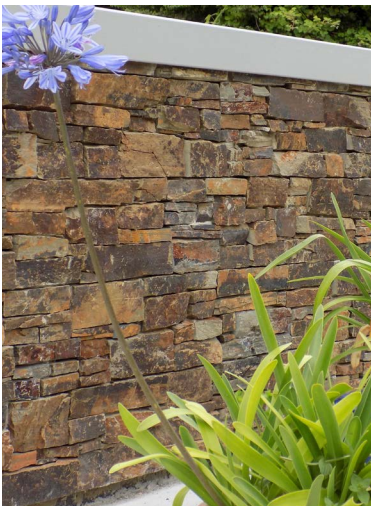
TIER® PANEL SYSTEM - MULTIPACK

TIER® PANEL SYSTEM - CONTEMPORARY

TIER® CARE & MAINTENANCE

TIER® ASSOCIATED PRODUCTS

INSTALLATION



Photographs within this brochure are intended as a guide to the general character, substance and colour of the materials. However, as these are natural products, there will always be some variation.

WHAT IS TIER?

Tier is a real stone panelling system specifically designed to create a distinctive, natural stone finish wherever it is used.

The panels rise in interlocking 'tiers', fitting seamlessly together, eliminating the need for specialist labour and making Tier a quick and easy system to use.

Each product is made from natural stone which is ideal for interior and exterior applications, and has been developed over years of experience.

TIER® Systems are designed to combine the timeless beauty and durability of real stone, with the ease of installation using thin stone veneers or panels. To achieve this we use handpicked stones for each product, which are then dressed by our expert stone masons before being placed into the moulds. TIER® Systems are recognized for their quality and natural beauty. Using natural limestone, slate, quartz, granite, basalt and sandstone our masons adhere to strict guidelines to create products with subtle colour blends, but maintaining traditional masonry methods which produce a consistent and authentic appearance. All our products have to pass stringent quality control procedures as well as meeting colour variance guidelines. These standards ensure a high quality product and result in a stunning finish on any application.

We continually develop natural stone solutions for the walling sector using traditional and innovative methods to deliver new products and colours. We also pride ourselves on our professional and personal customer service. This enables us to service a broad range of customers with modern and contemporary designs, and solutions for both large and small building projects.



WHY USE TIER®?

Authentic

As Tier is made from natural stone, it bears all the form and character of a dry-stone wall. The simple yet clever, 'Z' formation of Tier Panel System allows each section to interlock seamlessly together producing all the charm and elegance of a natural stone surface.



Versatile

The applications for Tier are endless. Its simple installation means it can be incorporated into both commercial and residential environments, adding beauty to either an entire structure or a small feature.



Elegant

Part of what makes Tier unique is its sizing. Each panel is deeper than other standard stone systems currently available, which allows the panels to have a greater variety of stone sizes, creating a realistic and authentic finish.

Simple

This panel system has been designed to achieve the look of a stone wall without the need for a qualified stonemason. No specialist skills are required to install Tier, which is why it is popular with contractors and developers alike.

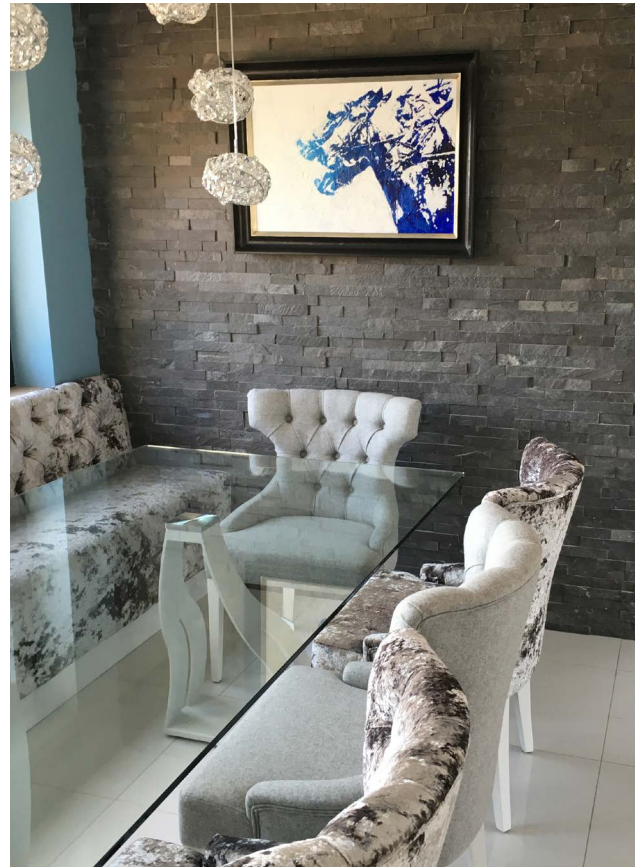
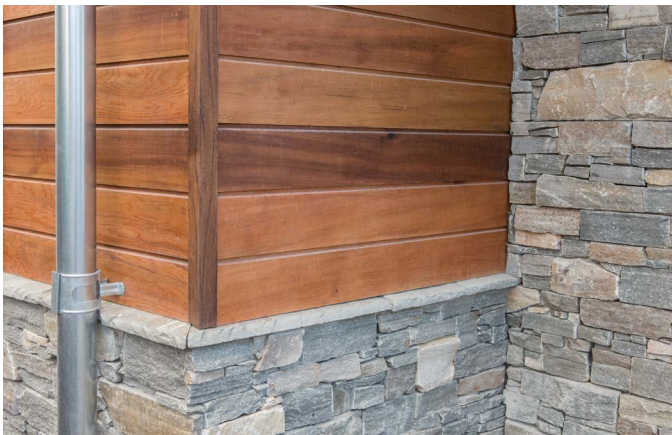


Economical

As well as reduced labour costs, Tier has the advantage of producing less waste during construction. Whilst traditional stone walling can have up to 25% wastage, Tier has virtually none.

Efficient

The modular design utilizes the time taken to build stone walling.. With TIER, it is possible to install up to 30m2 per day. This compares with 3m2 for Random Rubble Walling.



Guaranteed

Along with all the added benefits of Tier, comes piece of mind. Such is our confidence, TIER Panel System comes with a 25 year warranty.



TIER®



MULTIPACK

PANEL SYSTEM

The MultiPack Range has been developed as a universal walling system without the need of separate quoins. Its unique design means the MultiPack can be used for any Application, such as features walls, fireplaces, external entrances or commercial projects. The System comes with 4no panels per box, these panels can be used for straight areas or corners. TIER MultiPack offers the beauty and durability of natural stone, without the installation hassles, weight and high costs normally associated

with full bed natural stonework. Made from natural stone, our panel systems improve in colour and maintain their beauty and characteristics in all climates, therefore the perfect alternative to manufactured stone and traditional methods. Each panel is composed of a number of individual natural stones which have been dressed by hand and formed into panels. These modular panels fit seamlessly together, eliminating the need for specialist labour and making Tier a quick and easy system to use with virtually no waste.

COLOUR RANGE



Multicolour



Nordic



Slate



Rustic Granite



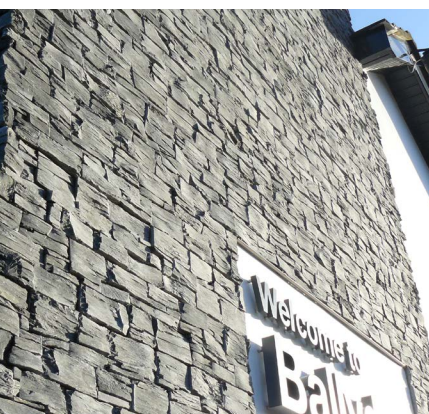
Quartz



Thin Slate



Image by: OPEN architecture



SPECIFICATIONS

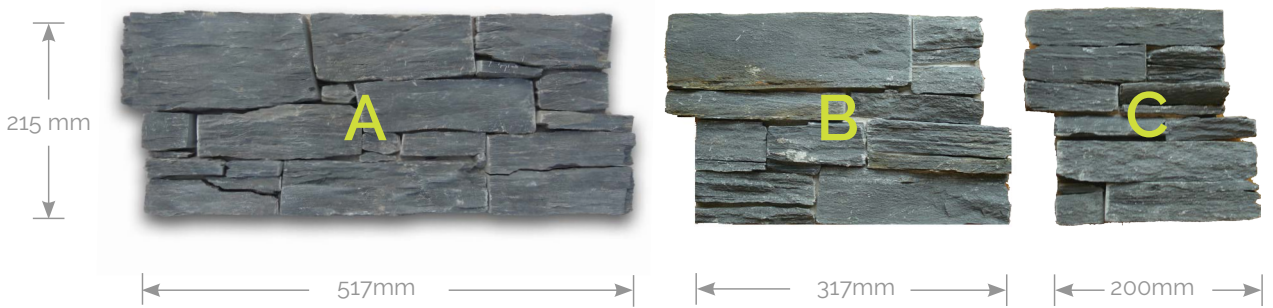
PANEL MEASUREMENTS

Type A 517 mm wide x 215 mm high

Type B 317 mm wide x 215 mm high

Type C 200 mm wide x 215 mm high

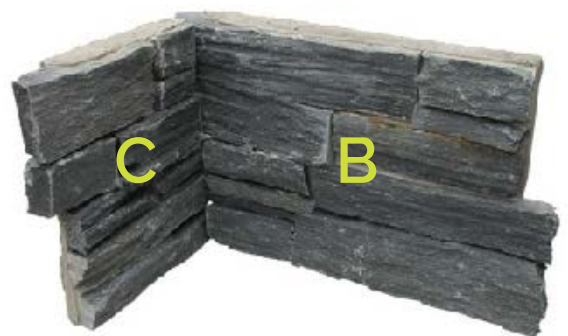
All Panels 38 mm - 40 mm variable thickness



EXTERNAL CORNER



INTERNAL CORNER



TIER[®]

Natural Stone **Made Simple**

Panel Systems

MultiPack

www.tiersystems.com

PACKAGING

2^{NO} Type A

1^{NO} Type B

1^{NO} Type C

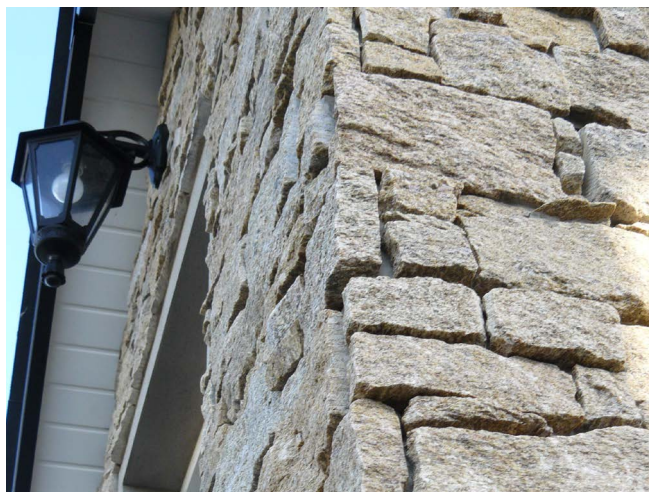
Total Weight per Box 28 kg

Total weight per m² 80-85 kg

Total Qty per box 0.33 m²

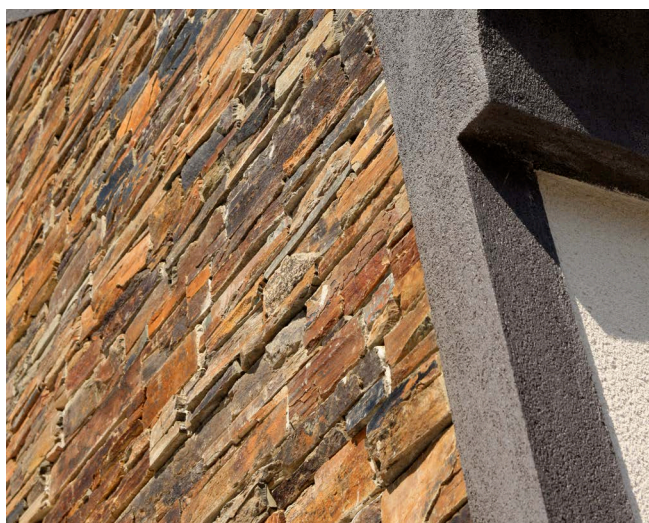
INTERLOCKING

The Tier Panel System can achieve an extremely natural finish to corners with rock face return ends giving an organic and rugged aesthetic. If budget is a factor, then this is the more affordable option.



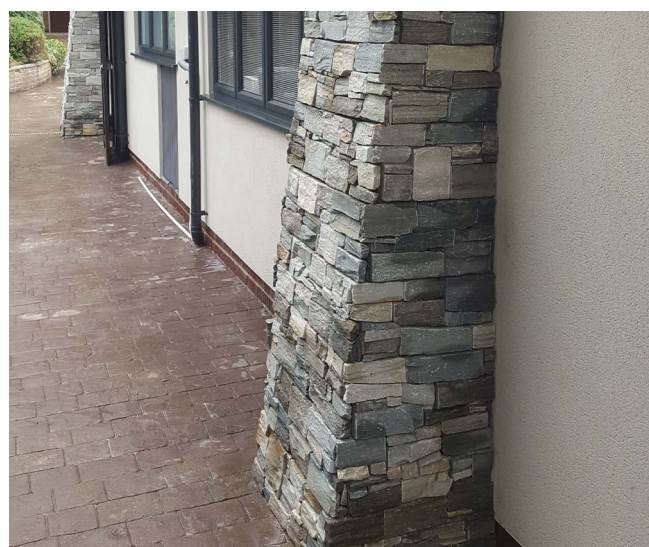
RENDERED

Tier is also effective when it comes to other aspects of the build such as windows and doors. The panel system works with rendered finishes to highlight their form and contours.



BUTTRESS PIERS

Using the standard MultiPack System you can achieve a very professional buttress pier as shown in the image.



CONTEMPORARY

PANEL SYSTEM

Our Contemporary Range is a thin stone veneer made from split face stone. The various depths and textures showcase the stones natural beauty. This three-dimensional look creates a stunning feature wall especially when illuminated. TIER® natural stone panel

system is ideal for exterior feature walls, courtyards and entertainment areas. Equally well suited for interior use, these stone panels are also perfect for use on fireplaces and feature walls. Due to its modular form, TIER Contemporary is quick and easy to install.

RANGE



Charcoal



Ivory



White



Ochre

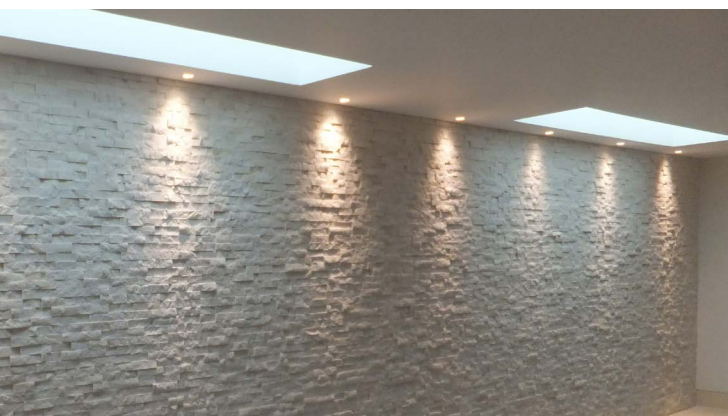


Autumn





TIER®





TIER PANEL SYSTEM

Tier uses natural stone, therefore each and every modular panel is completely unique, having its own colours, sizes and textures.

APPLICATIONS

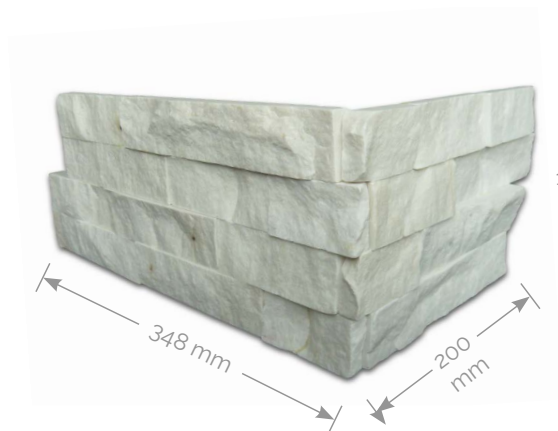
With its natural stone rustic finish, their clean, simple and aesthetically pleasing lines, TIER Panel System can transform any room or building from a plain, uninspiring project into a stunning feature, providing the simple yet unique contemporary wherever it is used.

TIER Panel System is ideal for Interior or External applications, and can compliment many finishes such as stainless steel, glass and wood, including pools, feature walls, kitchens, porches, sunrooms, bathrooms, fireplaces, office features, restaurants, hotels, garden walls and many more...

The beauty of TIER Panel System lies in its simplicity, and whether part of a large scale commercial application, or a small residential project you will find the System a quick, easy and economical building solution.

PANEL MEASUREMENTS

Panels are 548 mm long x 152 mm high
 Corner Panels are 348 mm and 200mm long
 x 152 mm high



PACKAGING PANELS & CORNERS

Panels and corners are sold by box
 Each Box contains 0.33m²
 Approximate Weight per Box 15 kg
 Approximate weight per m² 45 kg
 Each Box contains 4nr coarces

THE CORNERS

FINGER CORNERS

TIER Contemporary corners are designed and manufactured in a way to achieve the most authentic corner possible. Each corner piece slides seamlessly together to form a realistic stone corner.



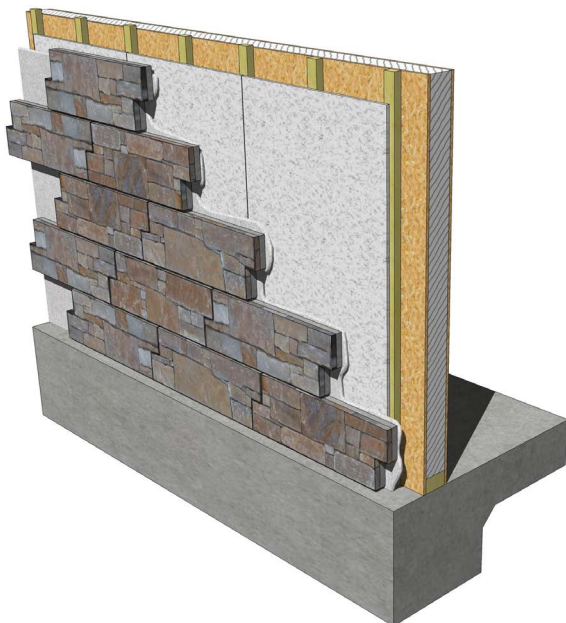
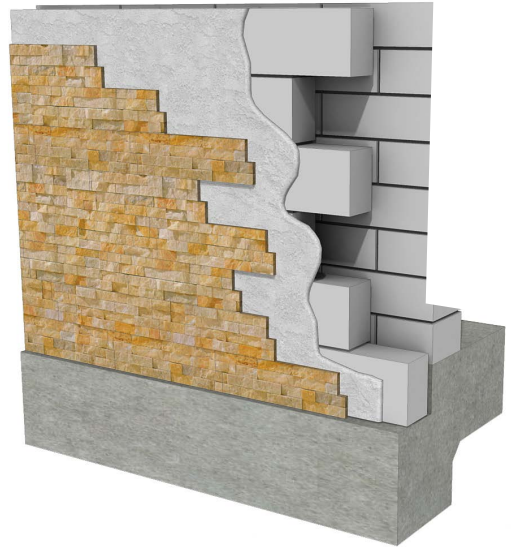
METHODS OF CONSTRUCTION

MODULAR SYSTEM

Tier is a modular panel system and can be fitted to various internal and external structures. Using TIER® Masonry Installation System we offer a 25 Year System Warranty for Solid Brick, Stone or Concrete Construction and a 15 year warranty using Timber Frame Construction.

TRADITIONAL BUILD METHOD

Tier Panel System can be attached to a new or existing concrete or block work structures using our TIER Masonry Installation System.



TIMBER FRAME METHOD

Tier can also be fitted to our approved Building Board which is screwed to a Timber Frame Structure therefore eliminating the need for a structural wall.

OBJECTIVE

The benefits of using TIER® Sealer is to protect the surface from moisture ingress and prevent staining from pollution and algae. Water soaking into the surface can cause damage to the stone in a number of ways. It can also bring minerals and salts to the surface, which are then deposited as white efflorescence marks. High levels of humidity combined with dirt and grime can penetrate the surface and cause mould and algae to grow making the stone harder to keep clean. Natural stone can also be a poor insulator when it is wet. Properly cleaned and sealed natural stone is much easier to maintain and making stain removal much easier and effective.



TIER® SEALER

Water based Impregnating Sealer for Interior & exterior use. Low odour For all types of natural and artificial stone, quarry, brick & paving. Honed, rough cut and polished surfaces.

A natural finish water based impregnating sealer. Delicately enhances colour. Helps protect against staining. Strongly repels water, oil and grease. Allows surface to breathe.



TIER® CLEANER HEAVY DUTY GRIME REMOVER

Suitable for travertine, limestone, sandstone, slate, marble, porcelain, granite, terracotta, quarry tiles, brick & external paving. Effective for removing oil, grease, ingrained dirt grime and old wax layers.

ASSOCIATED PRODUCTS

MASONRY INSTALLATION SYSTEM

TIER® MASONRY INSTALLATION SYSTEM

TIER® Masonry Installation System is a patented, versatile polymer fortified mortar specifically formulated for the installation of TIER® Panel and Veneer Systems. A high performance mix provides maximum non-sag performance for vertical installations and also obtains maximum bond strength to the substrate and selected veneers. Reinforced with Kevlar® for added strength, TIER® Masonry Installation System offers exceptional workability and is backed by a 25 Year System Warranty.



XCEL™ UBS

TIER® Contemporary and XCEL™ MGA is an innovative installation method for walling projects. This new system was developed by combining TIER® Contemporary Range and Xcel's MGA high tensile strength adhesive. XCEL™ MGA Adhesive is a fast clean simple method of bonding TIER® Contemporary Panels to any approved substrate, and offers both technical and productivity advantages.



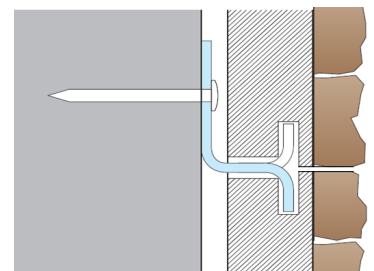
TIER® BUILDING BOARD

TIER® Building Board is a medium Density Magnesium Silicate Panel which has been developed to provide the System Build and Off-Site Construction Markets with a new fire rated external wall panel system. TIER® Building Board is tested to BS EN 594 (Racking), is A1 Non-Combustible, has a low Environmental Impact and provides a stable substrate for the TIER® Panel Systems.



MECHANICAL FIXING

We recommend that TIER® Stainless Steel fixing clips are used, in conjunction with TIER® adhesive, to areas of panel fitted above 3 metres from ground level.



TIER STAINLESS STEEL FIXING KIT

50^{NO} Stainless Steel Fixings per box
50^{NO} 6mmx60mm Hammer in Fixings per box or 50^{NO} Stainless Steel Screws for use with Timber Frame Structures



1 SUITABLE SUBSTRATES

Concrete

Concrete Block – Bare block preferable, but cement scratch coat is acceptable.

Brick (Concrete/Clay)

TIER® Building Board

Please ensure the substrate is structurally sound and capable of supporting the loads associated with the particular TIER® Panel range chosen. If using TIER® Building Board, ensure compliance with the relevant fitting guidelines. Do not fit to plastered or painting substrates.

2 PREPARATION & HANDLING

2.1 - Appropriate care must be taken when lifting and handling TIER Panel and TIER Adhesive. Personal protection equipment must be worn. TIER Panel should be handled with care. Rough handling, heavy impact and friction can cause breakage or weakness in panels. Boxes of TIER should not be laid or stacked on their side.

2.2 - The following equipment will be required during fitting:

Slow speed mixer (or appropriate drill & mixing paddle)

Large mixing bucket

Stone cutting water cooled table saw (or angle grinder with appropriate diamond blade)

12mm notched trowel

Pointing trowel

Rubber mallet

Spirit Level

Drill

Clay Hammer

Appropriate personal protection Equipment (e.g. gloves, goggles, dust mask, safety boots etc.)

2.3 – The Substrate should be structurally sound, clean and free from anything which would inhibit

full bond and adhesion between the surface and TIER® adhesive e.g. dust, dirt, loose particles, release agents, concrete sealers, curing compounds, paint etc. If the substrates surface is smooth, scuff to create a good key.

2.4 – Ensure the temperature of the substrate, and atmosphere, is between 5- 32°C. If the potential exists for frost, or a temperature drop below 5°C during curing, adequate protection should be provided. The moisture content of the substrate should be between 5-10%. Either dampen the substrate or allow to dry until the constant optimum moisture content has been achieved.

2.5– A temporary straight edge is necessary to support the TIER® panel during the adhesive curing period. Securely fix a straight edge to the substrate at the level you wish to begin fitting TIER® panel from. The straight edge can be fixed below finished ground level if required. Ensure the straight edge is level.

3 FITTING

3.1 – Mix TIER® adhesive as per instructions on bag. Only use TIER® Masonry installation System Adhesive.

3.2 – Always begin by fitting TIER panel to corners, working 'inwards' until panels meet, or towards a wall end. Only apply adhesive to an area of substrate which can be covered by TIER® panel within the open time (i.e. before the adhesive surface has begun to harden or 'skin over'). This open time is normally 15-20 minutes, but can be reduced depending on atmospheric conditions. Apply TIER® adhesive to a workable area of the substrate using the straight side of the notched trowel. The Adhesive must be thoroughly worked into the substrate to ensure maximum bond.

A further coat

of adhesive should immediately be combed on top using the notched side of the trowel. The beads or ribs of adhesive applied with the notched trowel to the substrate must all be following the same direction. 100% coverage of the area and full bond are essential. Do not 'dot and dab' when applying adhesive, as insufficient coverage will create air pockets and weakness.

3.3 - Using the adhesive application method described in 3.2, apply a full bed of adhesive, using the flat site of the trowel, to the back of the TIER® panel, remembering to fully cover the recesses at each end of the panel if not being used to form corners. Again, 100% coverage and full bond is essential.

3.4 – Place the TIER® panel into position against the substrate. It is essential that the panel is pressed firmly against the substrate. Enough pressure should be applied to ensure both layers of adhesive become a single fully bonded layer. Gentle use of a rubber mallet can be useful. Do not use a claw or lump hammer, as this will damage the panel. It is important that panels are presented to the substrate quickly, before the layers of adhesive have begun to 'skin over'. If a skin is allowed to form on any, or both, adhesive layers, this will result in an unacceptable bond.

3.5 – Repeat the process, described in 3.4, to fit horizontally across the row. TIER® panels should be interlocked tightly together. Remove any cement droplets on the edge of panels which could prevent a tight joint. Clean off any excess adhesive or spillages immediately. Using a long spirit level, check regularly to make sure all the panels in the row are level, making adjustments if necessary. Periodically check fitting and bond quality by removing a panel and inspecting adhesive transfer and bond. There should be no evidence of poor adhesive transfer or gaps in adhesive coverage, and no indication of adhesive layers or trowel marks should be present. 100% coverage and full bond are essential.

3.6 – When finishing a row, it is likely a TIER® panel will need to be cut to length. We recommend that when cutting a panel, the 'Z' shape joint is maintained. Cutting can be carried out using a static blade water-cooled stone cutting table saw, or a power saw with appropriate diamond blade. When using a non-static blade slight movements can cause high torsion forces. Occasionally this force can result in a stone being dislodged when cutting. This can be easily and quickly rectified, by simply fixing the stone back into place using TIER® adhesive or high quality polymer adhesive such as Xcel MGA.

3.7 – This fitting process is repeated on all subsequent rows. Use different sized TIER® panels, or rotate TIER® Quoins, when forming the corners of each row. It is normal for natural stone to vary slightly in shade and colour. Therefore, to achieve a mix of shades on the wall, select panels randomly from various boxes and crates during fitting. Ensure the vertical joints on each row are staggered, and horizontal joints are clean and tightly fitted.

3.8 – We recommend that TIER® Stainless Steel Clips are used, in conjunction with TIER® adhesive, to areas of panel fitted above 3m from ground level. In areas of high exposure, or where extreme weather conditions are expected, please contact your local supplier and request technical advice. Where TIER Clip use is required, create a slot in the top of the panel to receive the bottom 'lip' of the clip. The slot should be approx. 3mm wide x 20mm in depth and length. The slot should be positioned, allowing for adhesive, to ensure the clip is in full contact with substrate. A 3 mm recess must be made behind the slot to allow the clips to sit below the top of the panel. When in position, the clip is securely fixed to the substrate using the Stainless Steel fixings provided. The panel being fitted directly above the clips will require a slot on the bottom edge, positioned to receive the top 'lip' of the clip. This process is repeated as required.

3.9 – Expansion joints/gaps in the substrate must be carried through both the layer of TIER® Adhesive and TIER® Stone Panel. Ensure that adhesive is only applied up to the edge of the expansion joint, and not over it. Cut the TIER panel to length, ensuring that it stops at the edge of the expansion joint. The expansion gap must be filled with an appropriate joint filler.

4 CLEANING, SEALING & WATERPROOFING

4.1 – If cleaning or sealing is required, a full range of high quality TIER®, water based, breathable, low VOC (VOCs are Volatile organic compounds. Exposure to, or inhalation of, VOCs may pose a risk to health) products are available. We strongly recommend the use of sealers on our TIER Contemporary range. Sealing can help protect stone against staining and ease cleaning. If TIER stone panel and adhesive will be subject to permanently wet conditions, or if a waterproofing membrane is required, a range of quickly applied, quality products are available. For advice, please make contact using the information below.

Cement based products will take longer to harden and set at lower temperatures and should not be used below 5°C.

A range of TIER® Care & Maintenance products are available. Stone products which have been sealed may be easier to keep clean and maintain than unsealed stone.

5 TECHNICAL INFORMATION & WARRANTY

5.1 – If further advice or technical information is required, please speak to your local TIER supplier, or visit our websites www.tiersystems.co.uk and www.tiernaturalstone.co.uk

5.2 – To avail of the TIER System Warranty, your purchase, and project, must be registered.

To register please visit www.tiersystems.co.uk or www.tiernaturalstone.co.uk

Important - CED Ltd is not responsible for workmanship which is not carried out in full accordance with these fitting guidelines, our technical data sheets and local Industry Standard Guidelines and codes of practice.

WHERE TO FIND US



For more information about Tier products
and your nearest stockist's
please visit: www.tiersystems.co.uk