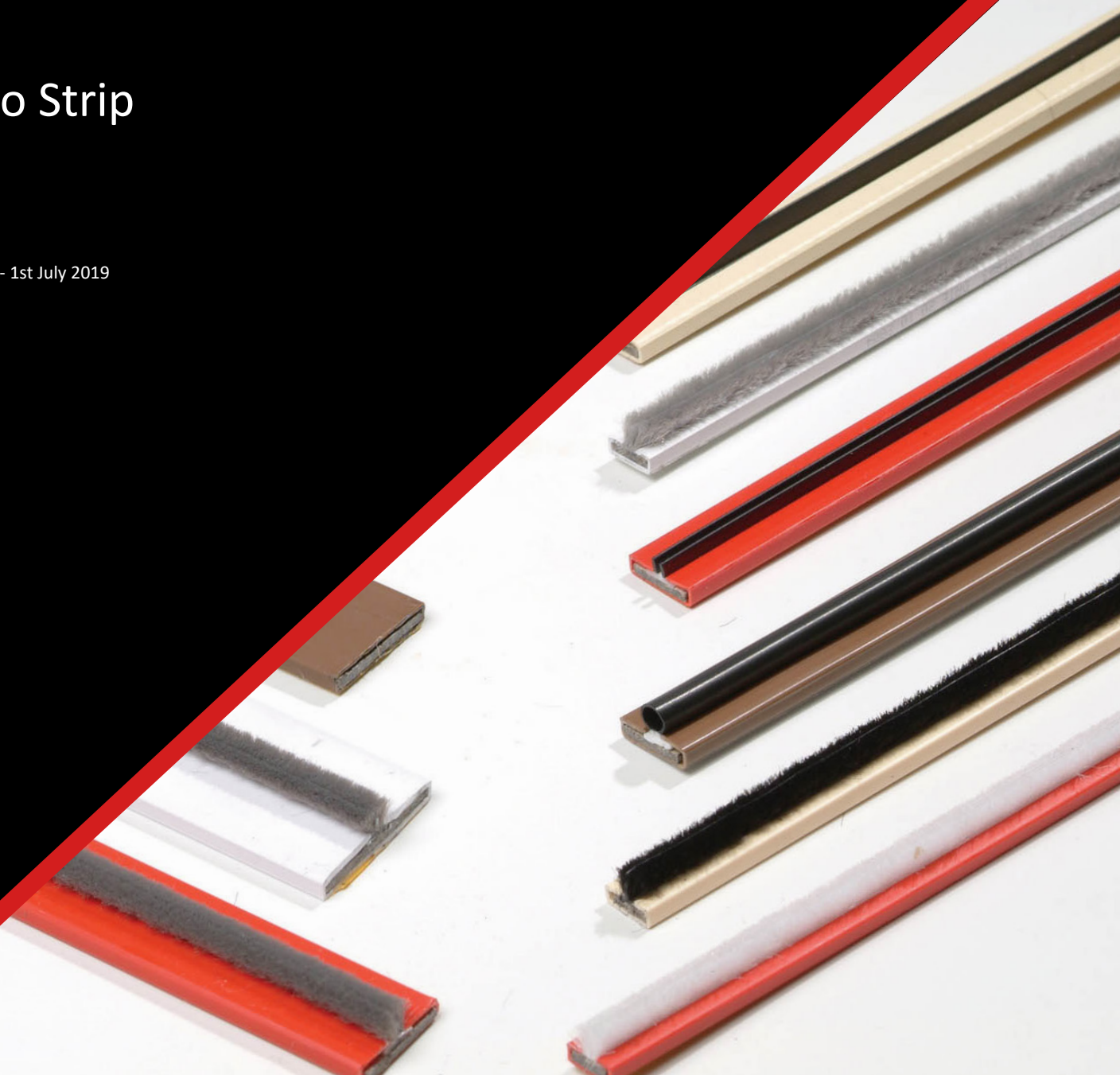


Product Data Sheet

Astro Strip

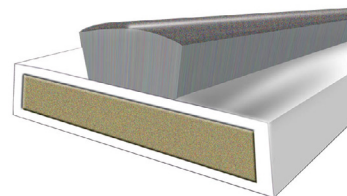
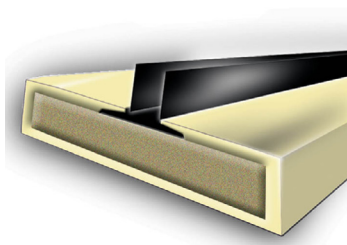
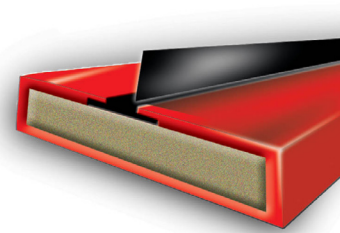
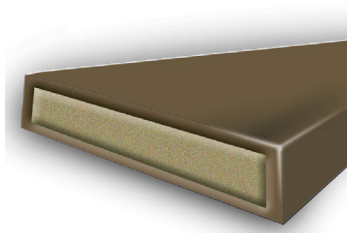
Revision 8 - 1st July 2019



Astro Strip

Intumescent Fire Seals

- Certifire Approved Fire Seals & Smoke Seals.
- Passed at BS476 Part 22 & 31.1 .
- Smoke Seals to EN1634-3.
- 30 or 60 minute rated types.
- Available in various colours.
- Seals are sold per 2.1m lengths. Also available in a Single Doorsets 2 x 2.1m + 1m or Double Doorsets 3 x 2.1m lengths.
- For easier shipping requirements also available in a Single Doorset 5 x 1050mm or Double Doorset 8 x 1050mm.
- All seals are supplied with self-adhesive backing tape.
- Smoke Seals have 6mm Brush Pile (4mm projection). Standard brush colours Grey, Black and White.
- Alternative seals: Black Neoprene Rubber draught seals in single or twin blade.



Product Description

Intumescent fire and smoke seals for fire door assemblies. An intumescent graphite based fire seal contained within a PVC sleeve for fitting into a rebate to either the leaves or the frame of a door. In the event of a fire the seal expands (intumesces) to many times its original volume and seals the gap around the door to provide a safe and effective barrier against the passage of fire, smoke and hot gases.

Astroflame Intumescent Fire Seals are available with or without a cold smoke seal in the form of a nylon pile. Astroflame smoke seals provide a permanent barrier to smoke - particularly important as smoke fumes travel faster and further than the fire itself. They also have acoustic and thermal applications.

All Astro fire and smoke seals are supplied with a self-adhesive backing tape as standard to facilitate quick and easy fitting.

Tested for 30 minutes with 10mm and 15mm to BS 476 part 22 & 31.1.
Tested for 60 minutes with 20mm and 25mm to BS 476 part 22 & 31.1.
Smoke seals tested to EN1634-3
Tested to 100,000 open/close cycles.

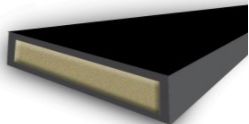
Fire and smoke seals are available in a choice of colours to suit your requirements or blend with decor.

To seal the bottom of the door we suggest using our **Surface Mounted Acoustic Perimeter Seals** or **Rebate Fit Acoustic Perimeter Seals**

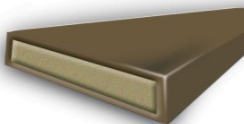
Product Availability

Intumescent Fire Seals. **Astro strip FO - fire only seals.**

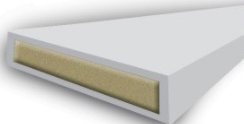
Intumescent seals for use where no smoke sealing is required.



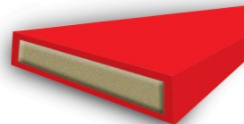
BLACK



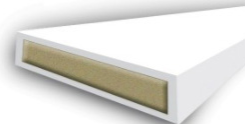
BROWN



GREY



RED



WHITE

Product Code	Type	Fire Rating	Profile Size	Lengths
AF1004 FO	Fire Only	30 mins	10mm x 4mm	2.1m/1.05m
AF1504 FO	Fire Only	30 mins	15mm x 4mm	2.1m/1.05m
AF2004 FO	Fire Only	60 mins	20mm x 4mm	2.1m/1.05m
AF2504 FO	Fire Only	60 mins	25mm x 4mm	2.1m/1.05m

To Order & Specify

Please contact us and quote the following information -

Quantity / Product Description / Product Code / Colour / Length

Typical wording - 100no / Astro Strip / AF2504 FO / Brown / 2.1m

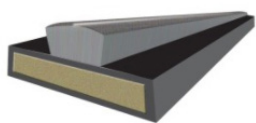
>> Tel: [01329 844 500](tel:01329844500) or >> Email: sales@astroflame.com

Product Availability

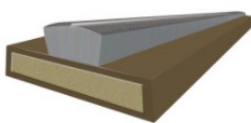
Intumescent Fire and Smoke Seals - Brush Type. **Astro strip FS - fire and smoke seals.**

Intumescent fire and smoke seals for a safe and effective barrier against fire, cold smoke and hot gases.

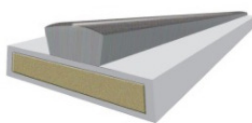
Available in various colours



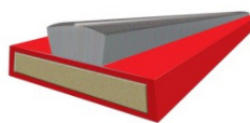
BLACK



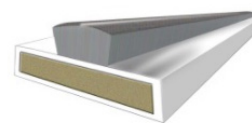
BROWN



GREY



RED



WHITE

Product Code	Type	Fire Rating	Profile Size	Lengths
AF1004 FS	Fire & Smoke	30 mins	10mm x 4mm	2.1m/1.05m
AF1504 FS	Fire & Smoke	30 mins	15mm x 4mm	2.1m/1.05m
AF2004 FS	Fire & Smoke	60 mins	20mm x 4mm	2.1m/1.05m
AF2504 FS	Fire & Smoke	60 mins	25mm x 4mm	2.1m/1.05m

To Order & Specify

Please contact us and quote the following information -

Quantity / Product Description / Product Code / Colour / Length

Typical wording - 100no / Astro Strip FS / AF1504 FS / White / 2.1m

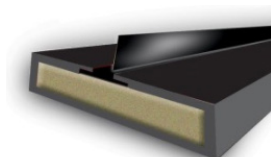
>> Tel: [01329 844 500](tel:01329844500) or >> Email: sales@astroflame.com

Product Availability

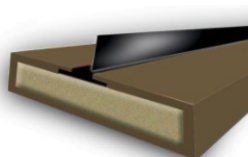
Intumescent Seals Fire and Smoke. **Astro Strip SB - Single Blade Seal**

Astrostrip SB - intumescent fire seal with a black Neoprene single blade smoke seal.

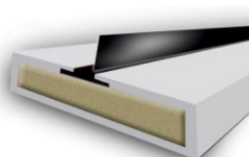
Available in various colours



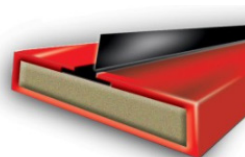
BLACK



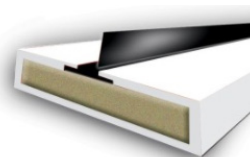
BROWN



GREY



RED



WHITE

Product Code	Type	Fire Rating	Profile Size	Lengths
AF1004 SB	Fire & Smoke	30 mins	10mm x 4mm	2.1m/1.05m
AF1504 SB	Fire & Smoke	30 mins	15mm x 4mm	2.1m/1.05m
AF2004 SB	Fire & Smoke	60 mins	20mm x 4mm	2.1m/1.05m
AF2504 SB	Fire & Smoke	60 mins	25mm x 4mm	2.1m/1.05m

To Order & Specify

Please contact us and quote the following information -

Quantity / Product Description / Product Code / Colour / Length

Typical wording - 100no / Astro Strip SB / AF2504 SB / Red / 2.1m

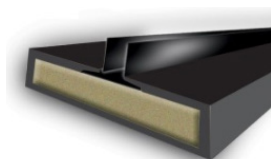
>> Tel: [01329 844 500](tel:01329844500) or >> Email: sales@astroflame.com

Product Availability

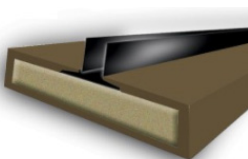
Intumescent Seals Fire and Smoke. **Astro Strip TB - Twin Blade Seal**

Astrostrip TB - intumescent fire seal with a black Neoprene twin blade smoke seal.

Available in various colours



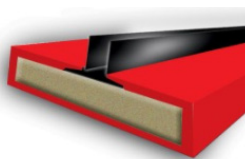
BLACK



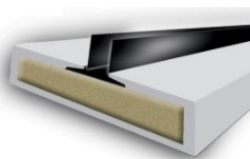
BROWN



GREY



RED



WHITE

Product Code	Type	Fire Rating	Profile Size	Lengths
AF1004 TB	Fire & Smoke	30 mins	10mm x 4mm	2.1m/1.05m
AF1504 TB	Fire & Smoke	30 mins	15mm x 4mm	2.1m/1.05m
AF2004 TB	Fire & Smoke	60 mins	20mm x 4mm	2.1m/1.05m
AF2504 TB	Fire & Smoke	60 mins	25mm x 4mm	2.1m/1.05m

To Order & Specify

Please contact us and quote the following information - Quantity / Product Description / Product Code / Colour / Length

Typical wording - 100no / Astro Strip TB / AF1004 TB / Grey / 2.1m

>> Tel: [01329 844 500](tel:01329844500) or >> Email: sales@astroflame.com

Storage, disposal & Health and Safety

Atro Strip should be stored indoors. No shelf life is giving as the fire seals will not deteriorate in storage. For further information please download the (SDS) Safety Data sheet or contact the technical team on:

tel [01329 844 500](tel:01329844500) or email sales@astroflame.com

Please note

Seals of 10 and 15mm are suitable to be used with **CERTFIRE** approved FD30 SL, SAL, or unlatched timber doors of max leaf size 2040 x 926mm and a minimum thickness of 42mm.

Each fire door will have its own test evidence from the door manufacturer. It is the responsibility of the purchaser to ensure that the seals are fully compliant with the relevant test evidence.

Installation

For further information on installation requirements please contact the technical team on: tel [01329 844 500](tel:01329844500) or email sales@astroflame.com

As part of our policy of ongoing improvements, we reserve the right to modify, alter or change product specifications without giving notice. Product illustrations are representations only. All information contained in this document is provided for guidance only, and as ASTROFLAME FIRESEALS LTD has no control over the installation methods of the products, or of the prevailing site conditions, no warranties expressed or implied are intended to be given as to the actual performance of the products mentioned or referred to, and no liability whatsoever will be accepted for any loss, damage or injury arising from the use of the information given of products mentioned or referred to herein.

The above information to the best of our knowledge is true and accurate and based upon current test data and is supplied for your guidance only. Customers should satisfy themselves to the suitability of the product in its intended use and no guarantee is given or implied since the conditions of actual use are beyond our control. ASTROflame (Fireseals) Ltd, disclaim any liability for loss, damage or other expense arising from the use of information, data or products mentioned or referred to and reserve the right to change any details or specifications without notice.