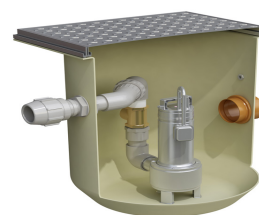


# COMPACT PUMPING STATIONS

Our uniquely designed Pumpstor Compact Pump stations are the newest addition to the market leading Klargester pumping systems. Quick to install and easily maintained, our compact pump stations are the ideal solution for outbuildings and extensions, cellars, pool houses and external WCs. Use our premium pumping station for both effluent and sewage, depending on the pump distance and height.



## TECHNICAL INFORMATION

Tank Size (mm)	Capacity (Ltrs)	Tank Material	Control Panel	Alarm	Pump Type
610 x 700	200	GRP	N/A	Optional	Single
560 x 1650	400	GRP	N/A	Optional	Single

## OVERVIEW

### FEATURES AND BENEFITS

3 pump options; effluent low head, effluent high head and sewage vortex offering complete flexibility

Non-return valves and outlet pipe compression coupling as standard

All systems contain a GRP chamber fitted with high quality pump, float switch, non return valves, pedestrian duty cover and frame

Service and maintenance plans available to prolong the life of the pump systems

Complete pre-fabricated solution ready for installation

Fully automatic

